

RZESZÓW



RZESZÓW - the largest city of south-eastern Poland, the capital of Podkarpackie Province and the centre of the Rzeszów Metropolitan Area. The seat of local government and province authorities, governmental and judicial institutions. It constitutes the economic, academic, cultural and recreational centre of south-eastern Poland. It serves as an important centre for aerospace, IT, chemical, commercial, construction and service industries.

Nearly 220,000 people live in the capital of Podkarpackie, a large part of which are students. The average age of the inhabitants is approx. 39, which is why Rzeszów is often called the city of young people.

Rzeszów is a place highly valued by the inhabitants in terms of the quality of life. They declare that it is a clean, safe and comfortable city, ensuring at the same time stability in life and satisfaction with the possibility of personal and professional development.

Rzeszów is the seat of the Aviation Valley, the biggest aviation cluster in Poland, with more than 180 companies representing the industry. The largest plant is Pratt & Whitney Rzeszów (formerly WSK „PZL-Rzeszów”), specializing in the production of aircraft engines. The chemical industry - Bausch Health, Sylveco, IT sector - Asseco Poland SA as well as packaging - Marmapolskie Folie, are also developing in the city. In Rzeszów, companies like BSH and Nestle (formerly Alima-Gerber) also have their headquarters.

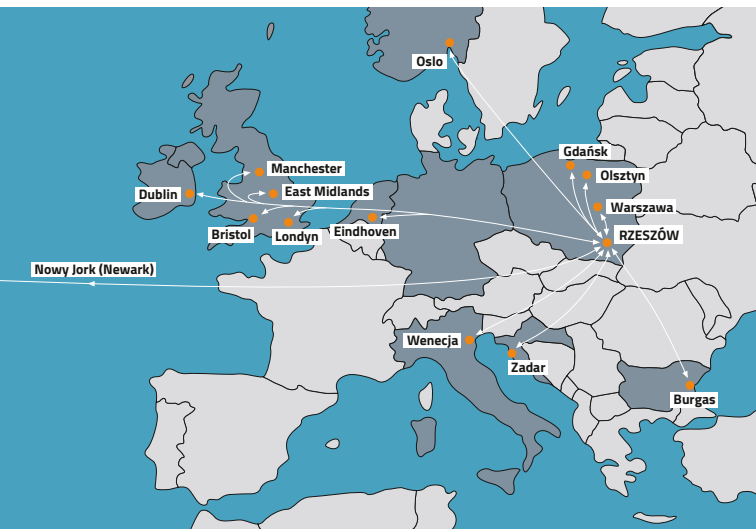


There are two volleyball clubs in the city with teams in the men's league - Asseco Resovia Rzeszów and the women's league - KS Developres Rzeszów, which in recent years has won three silver and two bronze medals in the Polish championship, the Polish Cup and the Polish Super Cup. Asseco Resovia Rzeszów is a seven-time Polish champion, three-time Polish Cup winner and the winner of the Polish Super Cup. Volleyball has become a "national sport" in Rzeszów, with 4,000 fans coming to matches held at "Podpromie", the Jan Strzelczyk Regional Entertainment and Sports Centre.

Rzeszow is a place of numerous festivals and cultural events. The World Festival of Polish Folk Ensembles organized here every three years since 1969 has been permanently incorporated into the cultural map of the city. During the festival, troupes from all over the world come to Rzeszow. Another significant festival is the Rzeszow Carpathia Festival, which has been organized since 2005. During the four days of the festival, young singers and music bands present their skills. The East of Culture festival - European Stadium of Culture, which takes place yearly by the end of June. As part of the festival, we could see and listen to such stars as Guano Apes, White Lies, Within Temptation, Coma, T.Love, Myslovitz and many others. The biggest audience is attracted by collective concertsts - joint performances of Polish bands with guests from the east, from such countries as Ukraine or Armenia.



Current flight timetable www.rzeszowairport.pl





ACCESSIBILITY

The city is easily accessible, thanks to the A4 highway (east-west) and S19 expressway (north-south). These routes enable you to reach Western Europe as well as the Ukrainian border (border crossing in Korczowa) and Slovakia (border crossing in Barwinka). Recently deployed Intelligent Transport System and extensive road network enable smooth commuting around the city. The convenient location of the city, right at the crossroads of important transport routes, and the proximity of Poland's southern and eastern borders intensify its significance as a transport node, and is favourable to the development of economy, tourism and trade. Rzeszow features modern means of public transport. For ticket information, see page 114.

The International Airport Rzeszów-Jasionka, which has the second longest runway in Poland, on which even the largest aircraft can land, provides direct air connections to the cities: Bristol, Burgas, Dublin, East Midlands, Eindhoven, Gdańsk, London, Manchester, New York (Newark), Olsztyn, Oslo, Warsaw, Venice, Zadar.

From Rzeszow, fast Pendolino trains leave every day, which can take you directly to Krakow, Warsaw, Gdansk or Gdynia.



HISTORY

Rzeszów was given an urban charter on Magdeburg law on 19 January 1354. At that time Casimir III the Great granted the urban charter to Jan Pakoślawic from Strożysko, who adopted the surname Rzeszowski from the city's name. It marked the beginning of the family who controlled Rzeszów's goods until the end of the 15th century. Rzeszów was a private city, the owners were in control of its operation, but the inhabitants were granted administrative and judicial immunity within the boundaries of the German law.

In the years 1498 and 1502 the development of Rzeszów was halted by Tatar invasions, during which numerous fires broke out in the wooden buildings around the city. Much more durable brick construction started soon after that.

In 1589 Zofia Rzeszowska married Nicholas Spytka Ligęza, thus becoming the new owner of the city and the entire Rzeszów dominion. The greatest period of Rzeszów history is associated with Nicholas Spytka Ligęza. During the rule of Ligęza the Rzeszów fortifications were constructed, he also rebuilt the communication system and began to erect many structures, such as the castle and monastery oo. Bernardine.

In the first half of the seventeenth century Rzeszów, with the hand of the daughter of Nicholas, Konstancja Ligęzianka, went into the hands of Jerzy Sebastian Lubomirski and became a residential town of the Rzeszów line of this family. Lubomirscy created here an important artistic and cultural centre. Under the Lubomirski rule the Piarist College was established, reconstruction of the castle fortifications and the castle itself initiated, a monastery and the church oo. Reforms were also built, along with the bell tower near the parish church, the new synagogue and the Summer Palace.

For four years (1768-1772), before the first partition of Poland, Rzeszów was the area of many battles during the Bar Confederation. On 13 August 1769 there was a battle of Powietna (nowadays Pobitno estate) between the Confederate and Russian armies.

After the First Partition, Rzeszów found itself within Austrian borders, which formed the Crown Province of the Kingdom of Galicia and Lodomeria. These lands were subject to the Austrian administrative and legal system. German became then an official language. In June 1845 Rzeszów became a free city by the decision of Emperor Ferdinand I.

Later development of the city was connected to the construction of railway lines and the development of the road network. In 1858 the city gained a railway connection to Cracow, then Lviv (1861), Sandomierz (1887), Jasło





Market, second half of the 19th century. Photo by E. Janusz, archives of the Photo Gallery of the City of Rzeszów

(1890) and Rozwadow (1900). These lines provided the possibility of reaching Austria, Germany, the Czech Republic and Hungary.

During the First World War, Rzeszów was occupied by the Russians and was recaptured by Austrians twice, thus suffering heavy destruction.

On 28 October 1918, the Polish Liquidation Commission was set up in Cracow, this meant the end of Austrian power in Rzeszów. On 1 November 1918, Rzeszów became a free city. Mayor Krogulski received an oath of allegiance to the Polish state from the officials of all the offices in the city.

In the years 1937-39 Rzeszów became an important centre of the machine industry, which was connected with the construction of the Central Industrial District. At that time the State Aviation Company - engine plant No. 2 was opened, which in 1945 was transformed into the PZL-Rzeszów Communications Equipment Factory (now Pratt & Whitney) and also the branch of the Hipolit Cegielski Factory began its operation. The industrial projects implemented in Rzeszów coincided with the works on the town's spatial development plan initiated by the City Council under the chairmanship of President Jan Niemierski. Many public buildings have been financed thanks to government funds, for example, the Polish Post Office at Moniuszki St., expansion of the General Hospital at Szopena St. or construction of the complex of Social Security buildings at Hetmańska St.

German occupation began in Rzeszów on 9 September 1939. From the early afternoon until late night the following day the fierce battle for the





Monument of Tadeusz Kosciuszko in the Market Square, the turn of the 19th century. Photo by E. Janusz, archives of the Photo Gallery of the City of Rzeszów

defence of its garrison city was led by Cavalry Brigade under Gen. Stanisław Maczek. Political, social and military reality in Rzeszów was complex and unstable during World War II. The confrontation of two opposing structures dominated here: the German occupation administration and the Polish Underground State (PUS).

After the Red Army had entered the city (2 August 1944), Tomasz Radwan was appointed as the City Commissioner by Adam Długosz, the Commander in Chief of the Home Army.

The loss of Lviv and the Eastern Borderlands after World War II made Rzeszów the administrative and cultural centre of the south-eastern Poland. In August 1944, Rzeszów was established as the capital of the Rzeszowski Province.



Former Piarist Convention, the turn of the 19th century. Photo by E. Janusz, archives of the Photo Gallery of the City of Rzeszów



Roundabout next to hotel „Rzeszów” and the Bernardine Monastery Complex, 1960s and 1970s. Photo by J. Fischer, archives of the Photo Gallery of the City of Rzeszów

The second half of the 1940s saw the completion of the process of preliminary reconstruction and removal of war damage. First residential houses of a new construction were put into service in 1949. Two years later, neighbouring areas were incorporated into Rzeszów, thus increasing the city's area over 4 times (from less than 8 km² to 39 km²).

1950s and 1960s was a period of intensive development of Rzeszów. New housing estates and many public utilities were quickly built then. The buildings of the Provincial Office, then the Provincial Committee of the Polish United Workers' Party, as well as the Provincial Headquarters of the National Police, WSK Cultural Centre, the market hall, the Zorza cinema, the hospital of the Ministry of Internal Affairs, the ZKS "Stal" stadium, the Rzeszów Graphic Factory (state-of-the-art facility) WOSiR sports complex (halls and pools).



The bridge on the Wisłok, along Lwowska Street, the turn of the 19th / 20th century. Photo by E. Janusz, archives of the Photo Gallery of the City of Rzeszów



Sandomierska St., the turn of the 19th / 20th century, currently Grunwaldzka St.
Photo by E. Janusz, archives of the Photo Gallery of the City of Rzeszów

In 1956 a water supply station was built in the city, gas, sewage, electricity and telephone networks were modernized and reconstructed. In 1965 Rzeszów received a new bus station. Alongside the electrification of the railway line Krakow - Przemyśl, the Main Railway Station was modernized and expanded, too. The first electric train entered the city on 21 September 1963. Rzeszów's economic development was shaped mainly by the pre-war tradition of the aviation industry and COP construction program associated with it. In 1948, in WSK-PZL plant, which shaped industrial face of the city, the construction of Soviet aircraft engines commenced. In the same year, the Wire Industry Plant was opened on site of the destroyed pre-war tool factory of H. Cegielski. In the spring of 1951 the plant was expanded under the name of Rzeszowska Fabryka Sprzętu Gospodarczego.

In 1952 they produced the first vacuum cleaner in Poland. After 15 years, in 1967, the factory was renamed to Rzeszowskie Zakłady Elektromechaniczne "Predom-Zelmer". The basis of Rzeszów's economic development in the post-war decades was therefore its intensive industrialization. In 1960s and 1970s a dozen new industrial plants were built, including Zakłady Mięsne, Zakłady Przetworstwa Owocowo-Warzywnego „Alima” (referring to pre-war candy factory), Zakłady Graficzne, Przedsiębiorstwo Farmaceutyczne „Polfa”, Zakłady Automatyki Motoryzacyjnej, Zakłady Optyczne „Optores”, Fabryka Wyrobów ze Srebra „Resovia Silver”, Zakłady Przemysłu Odzieżowego „Conres”.

Stanisław Nitka's Ferry on Wisłok, 1960s/1970s. Photo by Z. Postępski Janusz, archives of the Photo Gallery of the City of Rzeszów



Decade of the 1970s brought a lot of favorable changes to the city, but also deepened the problems of the inhabitants. The main one - and a nationwide - was a failure of the retail trade, lack of supply, e.g in the groceries. In August of 1980 the Rzeszow's MPK, PKS and WSK, the largest plant in the city, joined the national strike wave. On 12 September 1980, the Independent Self-governing Labour Union "Solidarity", based in WSK, was established. Antoni Kopaczewski was appointed its chairman. By the end of 1980, the structures of "Solidarity" were formed in most of the city's enterprises. Rzeszow found itself in the spotlight when the members of Solidarity and the then illegal farmers' "Solidarność" movement were involved in occupation strike at the Railway House (headquarters of the former WRZZ) from 2 January to 19 February 1981. The action led to the so-called Rzeszow-Ustrzyki agreement. The battle (occupation protest) for registration of the Independent Student Union was taking place in all of Rzeszow's universities. The liquidation of the prison in Lubomirski castle became a symbol of the era of "Solidarity" in 1980-81 in Rzeszow.

The last decade of the twentieth century saw plenty of significant events in the city; It brought not only political evolution and economic restructuring, but also led to profound changes in consciousness. On 2 June 1991 Pope John Paul II visited Rzeszow as a part of his pilgrimage to the homeland. The measure of the city's advancement was the appointment of diocese of Rzeszow on 25 March 1992 by the head of the Church. Rzeszow became its capital, and the church of The Sacred Heart of Jesus was raised to the rank of cathedral. In 1992, a reconstructed statue of Leopold Lis-Kula was erected in its former place. In September 1993, the first monument of Gen. Wladyslaw Sikorski in Poland was unveiled in Rzeszow. Rzeszow has its trumpet-call played from the town hall, composed by famous jazz artist Tomasz Stańko.



Maintaining the dynamic development of Rzeszow forced the city authorities to acquire new plots of land. In the years 2006-2021 the territory of Rzeszow increased more than twice. Rzeszow is a city where both sports and culture lovers as well as people looking for a stable job, high quality education and a friendly neighbourhood to live in can find their own place.

PODKARPACIE – INFINITE POSSIBILITIES

Podkarpackie Province - a gateway to Europe, a space of modern economy, inexhaustible nature, culture and ... opportunities. Innovative technologies of the Aviation Valley, IT and Pharmacy are here alongside places of active leisure, pure mountain nature, multiculturalism and creativity. Modern airport, EU border crossings, the East-West motorway, the special economic zones, and the resources of young, well-educated people make dozens of international companies set their headquarters here. And after work? Anything you want ! Starting from the urban climate of cafes, pubs, theatres, concerts, active holidays on land, water and in the air, among wildlife, Carpathian countryside, legend of the Bieszczady Mountains and the Low Beskids. Also, get immersed in the diverse, rich culture, architecture and art of the borderlands, find the time and space for rest, creativity and look at the hectic world from higher ground. From a bird's eye perspective.

It is best to begin your journey in Rzeszow. It is worthwhile to venture into the region to get to know the fascinating history of aristocratic residences: castles in Łańcut, Krasiczyn and Baranowo Sandomierskie, owned by excellent Polish families known from European history. Castles, palaces and mansions stand adjacent to the unique wooden architecture - appreciated by UNESCO. Its beauty lies in the temples of the multi-religious borderland and the collection of the Museum of Folk Architecture in Sanok - one of the largest and richest in Europe.

The domes of orthodox churches, church towers and silhouettes of former synagogues blend in with the extraordinary landscape of Polish Carpathians: the Bieszczady Mountains and the Low Beskids, Pogorze and Roztocze. Wild, untouched nature, abundance of flora and fauna, hundreds of kilometers of hiking, biking and horse riding trails are a challenge for the thrill seeking, active tourists. There is also the largest artificial lake in Poland - Lake Solina - with the largest dam in Poland and rich offer for sailors, canoeists, divers and beachers.

You can relax not only on land and water, but also in the air - those looking for adventures are being tempted by the famous pre-war gliders and paragliding centres. Air tourism is gaining popularity, with its strength being Arłamow - hidden among the endless forests - nowadays one of Europe's largest convention and leisure centres with its own runway and heliport - a great starting point to reach the entire Bieszczady Mountains. These legendary mountains are a part of the UNESCO Biosphere Reserve and can also be explored unconventionally: by traveling in the historic, 120-year-old narrow-gauge or railway bikes, awarded with the nationwide



Best Tourist Product Award 2015. The mountains are also tempting in the winter, offering downhill skiing, skitouring and cross-country skiing, snowboarding and snowgliding, sleigh rides, skating, dog sled racing or even hiking in the mountains on snow-shovels among white landscape.

It is also worth to visit other places in the region: historic town of Przemysl with its system of forts, the Museum of Pipes and Bells, historic Krośno with the Glass Heritage Centre, Jasło and surrounding vineyards, Sannok with collection of icons, Zdzisław Beksiński's paintings and wooden architecture. A visit to the world's oldest oilfield - the skansen museum in Bobrka - will be an unforgettable experience. Lovers of the borderlands should also visit Roztocze, whose vast areas rich in nature, history and culture, connected by the trail of Green Velo are ideal in terms of cycling trips.

After all the hiking and excitement, it is worth to relax in one of the numerous wellness & spa centres, the biggest selection of which is in Podkarpackie spa resorts: Iwonicz, Rymanów, Polańczyk and Horyniec-Zdrój. We will be accompanied by an excellent Podkarpackie Province cuisine, where you can taste both local food and regional beers, as well as exquisite court dishes with the addition of traditional fruit liqueurs and Podkarpackie wines. So, have a delicious and pleasant holiday!





CID TRAIL

The Central Industrial District trail is a special tourist proposition – instead of historical castles and palaces, concept gardens or the richness of Podkarpackie nature, we will see here factory buildings, remains of workers', craftsmen's and engineers' settlements as well as managers' villas.

THE RZESZOWSKA ROUTE

- ▶ Hotel baron Stefan de Ropp from Poznań
- ▶ Tenement house at 1 Asnyka St.
- ▶ Mural „Moose”
- ▶ Tenement house at 6 Grunwaldzka St.
- ▶ Post Office
- ▶ Tenement house at 12 Jagiellońska St.
- ▶ The Frederik Chopin Voivode Specialist hospital
- ▶ Infirmary of the Social Insurance Institution
- ▶ Workers' housing for Machine Tools factory H. Cegielski S.A.
- ▶ PZL estate
- ▶ Housing estate for the factory of Machine Tools factory H. Cegielski S.A.
- ▶ Hotel PZL

ADDITIONAL

- ▶ PZL Engine Factory – entrance gate
- ▶ PZL WSK Monument – boulevards





The Green Velo Trail leads to Rzeszow - the capital of Podkarpackie Province. Its numerous monuments and the Galician architecture of the centre are worth mentioning. The market is particularly beautiful, under which the underground tourist route was laid out. Green Velo trail connects the city centre and the train station. It is an important transport node, a good place to start or finish the expedition on the south side of the route.

We encourage you to take the tour "Podkarpackie metropolis neighbourhood", which is a great opportunity to get to know various landscape landmarks near Rzeszow. The route can be seen in its entirety at www.greenvelo.pl



Visit www.greenvelo.pl and check out the possibilities provided by the Eastern Bicycle Route. Web Portal is the largest bicycle tour guide over eastern part of Poland.

Before you set out, create a plan of your stay with an intuitive tour planner in just a few simple steps.



RECREATIONAL AREAS BY THE RIVER WISŁOK

The green heart of Rzeszów is the recreational area located on the Wisłok River, where Rzeszów residents like to spend their time on warm days. Next to the river and the Rzeszów lagoon, cyclists and roller-skaters can use cycle paths, which are part of a network of city paths with a total length of 120 km. People who prefer to relax can use the barbecue facilities or play mini golf. By the lagoon, there is also a large playground for children, where the youngest can expend their energy, and an Educational Fruit Orchard. Every year, bicycle and scooter rentals operate on the Rzeszów boulevards, and on weekends, children can ride a train.

Water sports enthusiasts can spend time on kayaks, pedalos or yachts. In the summer, there is a sailing school on the Rzeszów lagoon, where yacht and motor sailing courses are conducted.

Near the “Podpromie” hall, lovers of extreme sports can try their hand at the skatepark and dirt park, and in winter also at the snow park.





THE ŻWIROWNIA SWIMMING AREA

“Żwirownia” is a 3.5 ha water reservoir with a sandy beach of 20 acres. The bathing area is located at a short distance from the reservoir. During the summer season “Żwirownia” operates from 10:00 to 18:00, then the swimmers are under lifeguards' watch. There is also a mini playground for children and a volleyball court on the beach. You can rent water equipment, such as kayaks and water bikes.

normal	discount	children up to 3 years of age
5.00 PLN	3.00 PLN	free of charge

Water equipment rental: 10:00-18:00

Żwirownia Swimming pool, ul. Kwiatkowskiego, Rzeszów



ROSIR OPEN-AIR POOLS

Open-air swimming pools in Rzeszow are located at 23a Ks. Jałowego St. (entrance from Pułaski St.). They are open during summer from 9:00–20:00. The complex consists of 3 swimming pools – a 50-meter sports pool, a recreation pool with a slide, water jets and a fountain, and a paddling pool for children. Younger guests can also enjoy the water playground, which is located in the pools.



Price list

Opening hours	9:00–20:00	17:00–20:00
regular tickets	22 PLN	15 PLN
discount tickets	15 PLN	10 PLN

Discount tickets: primary and secondary school pupils, students up to 25 years of age, retirees and pensioners, persons with 1st degree disability with a carer - upon presentation of an ID card.

Children up to 3 years of age use the swimming pool free of charge.

ROSIR reserves the right to extend or reduce the hours of swimming pool opening during the summer season.

ATTRACTIONS

M MARKET SQUARE



The central square of the Old Town is the Market Square with the Town Hall and a well from the 17th century. The present Market is slightly different from the original 15th-century appearance - only the three frontages are built-up with tenement houses that have undergone reconstruction over the centuries. There are hotels, restaurants, clubs, pubs, museums and various institutions. One of the more interesting is the tenement house No. 19. Fragments of brick and stone walls and vaulting as well as pointed Gothic lintels discovered underground, which can be seen in the Rzeszów Cellars, allow the origins of this construction to be dated to the turn of the 15th and 16th centuries. On summer evenings, the market square hosts many performances by famous singers, music and dance-vocal groups.





„RZESZÓW CELLARS”

INTERACTIVE CULTURAL INSTITUTION

A tourist route under the Rzeszów market square, the remains of former soil shops, merchant and trade depots and warehouses. The cellars in Rzeszów experienced their heyday in the 16th-18th centuries, although the first information about the use of an underground space for commercial purposes comes from a document issued in 1427 and concerns a sub-basement under the then existing Town Hall. Rzeszów Cellars are a material relic of the commercial and mercantile past of the city lying on intersecting communication routes connecting east and west. The underground route runs under the north and eastern frontage of the Market Square, and the oldest cellars date from the 15th-16th century and are located about 2 meters under the market square. The deepest trail leads to cellars 10 meters below the Market Square. Rzeszów Cellars have recently undergone a metamorphosis; the old underground route has been fully automated, enriched with multimedia, applications and a new arrangement of cellars. This is the result of the implementation of the project „Rzeszów Cellars - interactive cultural institution”. Thanks to this, the tourist can absorb the history of the place and the past of the underground much better. There are two options for a walk through Rzeszów Cellars: „Images of history” and „Interactive legend”.

Rynek 26, 35-064 Rzeszów

OPENING HOURS

Tuesday - Sunday: 10:00–19:00

duration of visit: 100 minutes

group size: max 6 people



TOWN HALL

The most prominent building in the Market Square is the Town Hall, built probably in 1591 by Nicholas Spytka Ligęza. The present appearance of the building dates back to the turn of the 19th and 20th century. Fragments of old walls and beautifully vaulted cellars have been discovered in the basement of the Town Hall.

The seat of the President of the City of Rzeszów is located in the Town Hall.

Every day at 6:00, 9:00, 12:00, 15:00, 18:00 and 21:00 the bugle call „To the four corners of the world” composed by Tomasz Stańko is heard from the Town Hall.





ST.STANISLAUS AND ST. WOJCIECH FARA CHURCH

The church probably existed before 1363, but it was destroyed during the great fire. Only the Gothic presbytery, dating back to the beginning of the 15th century, remained. In the first half of the 17th century a belfry was erected, and in 1754 the main aisle was rebuilt, lateral aisles were added and it was given a baroque décor. In the chancel there are gravestones of the Rzeszów's families. In the years 1962-1965 a thorough restoration of the church took place.





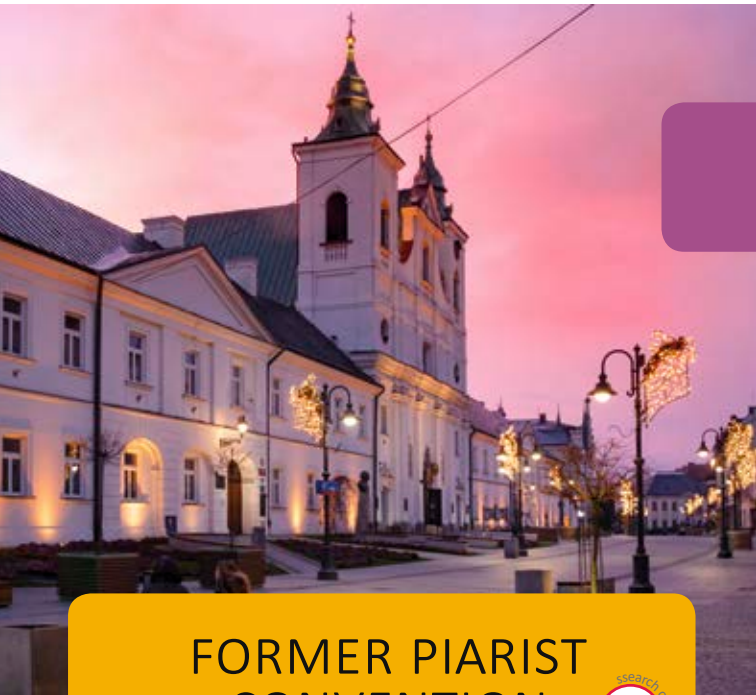
3 MAJA STREET

The oldest street in Rzeszów's old town, at the same time the most representative. There is the fara church, the Piarist convent, the statue of Tadeusz Nalepa, many dining options, "Zorza" cinema - the oldest cinema in the city.

The street before the partitions was called Pijarska. On the map from 1826 it is listed as Expiaristengasse, or Popijarska, but two years later it was already known as Herrengasse - Pańska street. In the inter-war period, despite having the official name of "3 Maja" it was called "Pańska" and also "Paniaga".

After the renovation in 2017, the street gained a pre-war look. As a result of the archaeological work carried out at the house No. 14, a window of time has been created showing how the street surface has changed over the centuries.





FORMER PIARIST CONVENTION



The Piarist Convention included a church, a monastery and a school. The postpiarist complex features **the church of St. Cross** in the centre, built between 1644-1649 according to the design of Tylman of Gameren. It is a one-nave temple with two towers in the facade and a chapel on the north side. Late baroque decor with stucco decorations by Jan Ch. Falconi from the end of the 17th century. In the chancel, at the entrance to the sacristy, there is a mausoleum of the Lubomirskis family.

In the monastery building there is now **the Regional Museum**, with rich collections in the fields of art, history, ethnography and archaeology, exhibited in the form of permanent exhibitions (e.g. Galeria Dąbskich) or temporary exhibitions. In the old refectory you can see frescoes from the end of the 17th century.

The Piarists founded the Collegium Ressoviense next to the monastery in 1658. Fr. Stanislaw Konarski taught here - currently the patron of Secondary School No. 1. The school is one of the oldest in Poland. Many of its students were glorified on the pages of Polish history and in culture. Ignacy Łukasiewicz, Jozef S. Pelczar, Wladyslaw Sikorski, Władysław Szafer or Julian Przyboś.





PANIAGA FESTIVAL



Paniaga Festival is one of the favourite cultural events in Rzeszow, taking place during the May 3rd Constitution Day.

3 Maja Street, formerly Pańska street, is one of the most important and oldest streets of Rzeszow, once used to be called the Paniaga. Uninterruptedly since the 14th century, it has been the centre of the city and the place of cultural events. Starting from 2003, May 3 celebrates not only the adoption of the Constitution, but also the Paniaga Festival, the favourite pedestrian promenade in Rzeszow. During the event 3 Maja street is full of life, offering numerous attractions such as outdoor exhibitions, dance shows, movies, food tastings, and concerts on several stages set in the city centre.

The traditional feature of the Paniaga Festival is a handicraft and regional products fair, as well as an opera concert, which is presented every year on the Rzeszow Market Square.



THE LUBOMIRSKI SUMMER PALACE

The Lubomirski Summer Palace was built thanks to the efforts of Hieronim A. Lubomirski according to the design of Tylman van Gameren. Located in close proximity to the Lubomirski Castle, it has undergone many reconstructions over the centuries. It has not retained its original architectural design or the baroque gardens that stretched around it. Currently, it houses the District Medical Chamber.

The interiors of the Lubomirski Summer Palace are available to visitors during the working hours of the Chamber. Free admission.



ART NOUVEAU VILLAS

There are Art Nouveau Villas at al. Pod Kasztanami: **No. 6** - built in 1903, designed by eng. K. Hołubowicz, eclectic, with a rich facade and a bust of A. Mickiewicz in the niche; and two Swiss-style villas, designed by T. M. Tekielski: **No. 8** (1899) and **No. 10** (1900), called Pod Sową, on which there is a sundial with the sentence: *You see the hour, yet you do not know the hour.*





CASTLE

The construction of the castle started at the end of the 16th century by the contemporary owner of Rzeszów - Nicholas Szytek Ligęza. In the second half of the 17th century the Lubomirskis expanded the castle and encamped it with a stone wall with bastions. It owes its modern appearance to the last reconstruction at the beginning of the 20th century. Currently the castle at Śreniawitów 3 st. is the seat of the District Court.

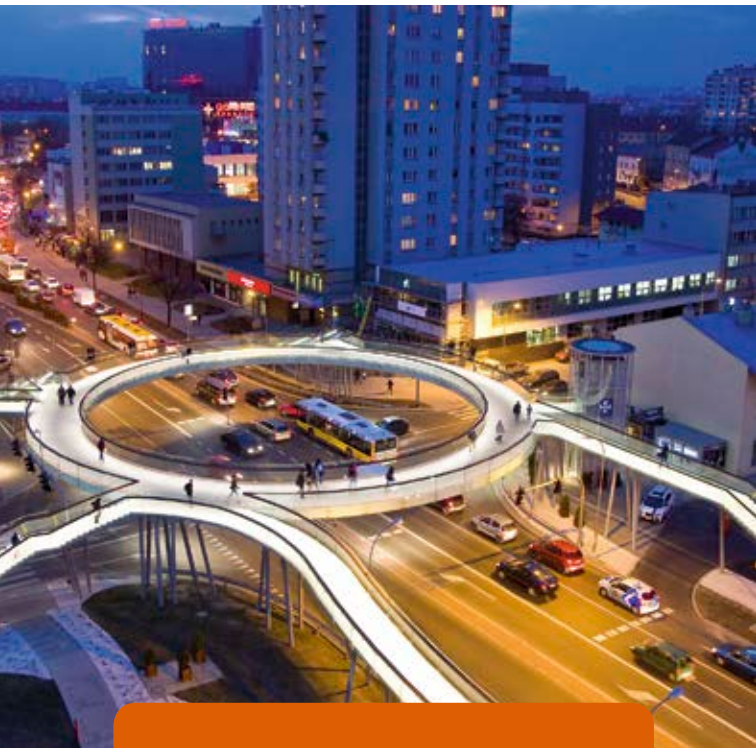
MULTIMEDIA FOUNTAIN

On the side of the castle is there is a Rzeszow Multimedia Fountain. The main attraction of the fountain complex are water jets dancing to the music and foggy water screen, where the audience can watch film, laser and 3D presentations. Next to the fountain there is an amphitheatre, where you can watch spectacles, which are a combination of music, light and moving water.



SHOWS
TIMETABLE





ROUND FOOTBRIDGE

Round footbridge is the only object of this type in Europe. In addition to its innovative shape, it is distinguished by the selection of finishing materials: specially bent and hardened glass, elevator shafts, exotic wood, resistant to changing weather conditions alongside illumination of the whole object. This unique structure was created over the intersection of al. Piłsudskiego and Grunwaldzka St.- one of the most frequented places of the main communication artery in Rzeszow. Thanks to its location, the footbridge provides an excellent viewpoint.

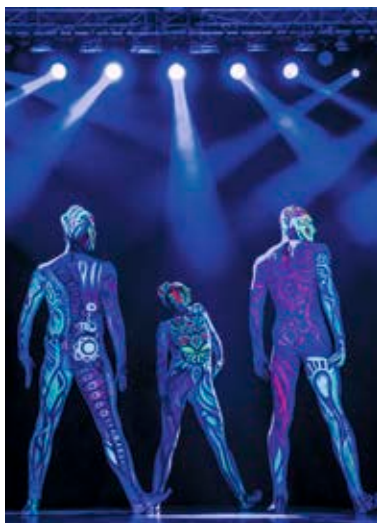


BERNARDINE MONASTERY COMPLEX

Bernardine monastery with The Assumption of the Blessed Virgin Mary Church was established in the first half of the 17th century. Originally it was the site of a wooden church, built in 1536. In the chancel there are gravestones of the Ligęza family. At the Shrine of Our Lady of Rzeszow - Patroness of Rzeszow - there is a late Gothic figurine of Our Lady with the Child from 1513. In 2008 the church received the title of Minor Basilica.

At the foot of the Monastery there are Bernardine Gardens arranged in Italian style. They are open every day from 8 AM to 9 PM.







THE EUROPEAN STADIUM OF CULTURE



The European Stadium of Culture is currently the most important cultural event of Rzeszow.

The European Stadium of Culture - has taken place every June since 2011. It was launched in connection with the Euro 2012 Football Championship. Since 2013, it has been implemented using a new formula under the project EAST OF CULTURE, with the involvement of three cities - Rzeszow, Lublin, Bialystok. EAST OF CULTURE is the largest undertaking of its kind in Poland consolidating the activities of three cities into one coherent project, using the best traditions of the cultures of the east and the west. There are about 40 different events, including concerts, exhibitions, shows, film presentations, workshops, and meetings.

At the main concert over the last years the city of Rzeszow was visited by the following bands: White Lies, Kayah, Jamal, The Fratellis, Kasia Kowalska, Patrycja Markowska, Within Temptation, Skubas and Jono McCleery from Great Britain, Sarsa and Green Room & Dato Lomidze from Georgia. Piotr Rogucki, Kortez, Guano Apes, guitarist Dean Brown, Hey, Voo Voo, Julia Marcell and many more.

www.stadionkultury.pl



MURALS



GIRL IN HEADPHONES

Created in 2016 as part of the Urban Space Festival. Its author is Arkadiusz Andrejkow. The mural is located on a building at 8 Hoffmanowa St.

MOOSE

The “Moose” bomber, or more precisely its technical drawing, adorns the wall of the tenement house at Grunwaldzka St. (from Sobieskiego St.). The bomber used to be produced by plants operating within the Central Industrial District (page 14). The components of the engines for this aircraft were made at the PZL Rzeszow Aircraft Engine Factory No. 2 (now Pratt & Whitney). The mural’s creators were artists from the Fresh Vision Studio agency.



SAXOPHONE

During the Rzeszow Jazz Festival 2017 on the wall of the tenement house at 9 Targowa St., a colourful autophone saxophone by Michał Czerko appeared.



FACES

A mural by Arkadiusz Andrejkow. It is located next to the bike path adjacent to the Jan Strzelczyk Regional Sports and Performing Centre in Podpromie St. On the wells there are faces of 14 people associated with Rzeszow, including historian Franciszek Kotula, musician and author of Tomasz Stanko's trumpet-call, and the theatre director Jerzy Grotowski.



IRENA SENDLER

A mural commemorating the best-known of the Righteous Among the Nations was created in 2018 on a tenement house at 18A Kopernika St. Its author is Kamil Kuzko.

„HIGH NOON”

A mural on the wall of the tenement house at 13 Lisa Kuli St. by Kamil Kuzko was created during the festival "High noon. Fred Zinnemann returns to Rzeszow ", in August 2018.



FAMOUS



Fred Zinneman (1907-1997) – American film director born in Rzeszow, winner of four Oscars. His most famous film is „High noon”, a western with Gary Cooper in the lead role. The mural referring to the director’s work is located on the building at 13 Lisa Kuli St.



Tadeusz Nalepa (1943-2007) – called the Father of Polish Blues, founded the bands Blackout and then Breakout. He graduated from the Music School in Rzeszow. On 3 May St., after his death, a monument commemorating the artist was erected. Every year, on the Rzeszow boulevards, the Breakout Days festival is organized, which is a musical tribute to the artist.

Tomasz Stańko (1942-2018) – a well-known jazz trumpeter and composer. He was born in Rzeszow and, as he said, “the place where a person is born is a place that they remember for their whole life”. He composed the Rzeszow Trumpet-Call “On the four sides of the world”, which can be heard daily in the Rzeszow Market Square at 6:00, 9:00, 12:00, 15:00, 18:00 and 21:00.



Edward Janusz (1850-1914) – he ran a photographic studio in Rzeszow, which was active under the name of E. Janusz in the years 1886-1951. Photographs by Janusz and his family document the everyday life of the inhabitants of Rzeszow. The Photo Gallery of the City of Rzeszow, which has in its collections 1850 glass negatives from the plant of E. Janusz organizes exhibitions presenting their photographs. A permanent exhibition “Truths and Legends about the Town Hall of Rzeszow” is located on the Round Footbridge over Piłsudski Ave. (p. 32).

Józef Szajna (1922-2008) – world-famous production designer, theatre director, screenwriter, theoretician of the theatre, painter, graphic artist. During the Second World War he was a prisoner of the concentration camps in Auschwitz and Buchenwald, which influenced the character of his artistic creation. His sculpture “Passage 2001” is located on Cichociemni Square near the Market Square. The Szajna Gallery at 7/9 Sokół St. is devoted to his work (more on page 48).



Józef Szajna, Jerzy Grotowski, Tadeusz Kantor – three prominent Polish Theatre reformers who came from Rzeszow and the surrounding area. To commemorate these creators the Maska Theatre, organizes the festival “Sources of Remembrance. Szajna-Grotowski-Kantor” (page 58).



Anna German (1936-1982) – Polish singer and composer, her most famous song “Dancing Eurydice” was performed for the first time on the boards of Estrada Rzeszowska, where she worked in the 1960s. In Rzeszow, on the Franciszek Kotula estate, there is a street dedicated to the artist.



Jan Strzelczyk (1942-2007) – Polish volleyball player and volleyball coach. As a coach, he led the Resovia volleyball team to the Polish Championship in 1971, 1974 and 1975. He introduced to volleyball the play called “double short”. The Sports Hall ROSIR on Podpromie St. bears his name. In the square next to the Hall there is a sculpture “double short” by Marcin Ruta.

Wojciech Kilar (1932-2013) – world-renowned pianist and composer, creator of film music for such films as “The Pianist” and “Pan Tadeusz”. In the 1940s, he studied at the State Music School No. 2 in Rzeszow. He lived in a tenement house on Grunwald St. Currently, the school to which he attended bears the name of the composer.



CULTURE



DISTRICT MUSEUM IN RZESZOW

3 Maja 19 st.,
35-030 Rzeszów,
tel. +48 17 853 52 78
www.muzeum.rzeszow.pl

OPENING HOURS:

Tuesday - Friday:
8:00-15:30
Thursday
8:30-17.30
Saturday - Sunday:
10:00-16:00



The Regional Museum in Rzeszow is located in a 17th-century building, which alongside the church and the school was once an integral part of the Piarist monastery complex. Rich museum collections are exhibited in the sections: Archeology, Art, History and in the Library. There is also a workshop specializing in the Preservation of Works of Art. The unique interiors and very good acoustics of the refectory are used for concerts, poetry evenings, meetings, theatre monodramas. On the grounds of a spacious and atmospheric pleasure garden numerous outdoor events take place, e.g. "Museum Night".

ETHNOGRAPHIC MUSEUM IN RZESZOW



Rynek 6,
35-064 Rzeszów,
tel. +48 17 862 02 17
www.muzeumetnograficzne.rzeszow.pl

OPENING HOURS:

Monday, Tuesday, Wednesday, Friday
8:30 - 15:30
Thursday 8:30 - 17:30
Sunday 10:00 - 16:00
during the holiday period: 12:00 - 18:00
on Sundays (Tuesdays and Thursdays
extended until 18:00)

The Franciszek Kotula Ethnographic Museum - Branch of the Regional Museum in Rzeszow documents all the manifestations of life of the old inhabitants of the countryside. The Museum collection contains not only agricultural tools and household items, but also women's and men's outfits worn by Lesioki, Rzeszowiacy and Pogorzanie. Here are numerous exhibits representing the former inhabitants of the village. Museum collection is enriched with source documents and ritual attributes. Also, the collection of folk instruments, often made by country musicians themselves, is of great historical value. The archives of the history of folk culture constitutes an integral part of the Museum.

MUSEUM OF THE HISTORY OF RZESZOW

Rynek 12
35-030 Rzeszów
tel. +48 17 875 41 99
www.mhmr.muzeum.rzeszow.pl

OPENING HOURS:
Monday, Tuesday, Friday: 8:30 - 15:30
Thursday: 8:30 - 17:30
Open on the first weekend of the month 12:00–18:00
*Check holiday opening hours



“Six Centuries of Rzeszow” is the title of an exhibition that can be visited in the Museum of the History of Rzeszow. Four rooms feature an exhibition on the history of the city and region, the most important events in its history, as well as profiles of the most famous inhabitants of Rzeszow and other people connected with this place. The first part of the exhibition (room I) is devoted to the history of the city from its foundation under the Magdeburg rights in 1354 to the First Partition of Poland. This section houses objects associated with having power in the city (e.g. documents, town till, town hall bell) and with religious life of the city dwellers. Their daily life is illustrated by guild artefacts and works of craftsmen from Rzeszow. Medieval and hussar armour together with cold weapons and religious exhibits complement this part of the exhibition.

MUSEUM OF BEDTIME CARTOONS FROM WOJCIECH JAMA’S COLLECTION IN RZESZOW



Mickiewicza 13 st.
35-064 Rzeszów
tel. +48 17 748 36 51
www.muzeumdobranocek.pl

OPENING HOURS:
Tuesday - Friday: 9:00-17:00
Saturday - Sunday: 10:00-18:00

Museum of bedtime cartoons from Wojciech Jama’s collection in Rzeszow is a place that evoking many emotions and memories. The collection consists of original dolls from the films: Teddy Bear, Colargol Bear Adventures, Little Penguin Pik-Pok, Three Bears, Plastus Diary, Jacek and Agatka; celluloids, drafts and scenery projects of animated drawings: Reksio , Bolek and Lolek, Baltasar Gąbka’s kidnapping, and many everyday objects with images of cartoon characters. The museum organizes many exhibitions, competitions, events and is responsible for creative educational activities and projections. Watching the collection is great fun for children, and some older guests can go back for a while to revisit their own childhood.

MUSEUM OF THEATRE PUPPETS

Mickiewicza 13 st.
35-064 Rzeszów
tel. +48 17 862 68 08
www.teatmaska.pl



The museum presents puppets, stage design and decoration props from past performances. During over 50 years of artistic activity, the Theatre has produced more than 200 premieres. It has collaborated with the most eminent scenographers of Polish puppet theatre, Jan Berdyszak, Ali Bunsch, Adam Kilian, Andrzej Aleksander Łabińc , Leokadia Serafinowicz, Raymond Strzelecki, Zenobiusz Strzelecki, among others. The creation of the Museum of Theatre Puppets has made it possible for viewers to see the rich collections previously kept in theatre storage. The Museum is a place of popularization and promotion of the art of puppet theatre, therefore it is the right place for the theatre education of children and teenagers.

THE DAIRY MUSEUM BY THE TADEUSZ RYLSKI FOOD SCHOOLS COMPLEX IN RZESZOW



Warszawska 20 st.
35-205 Rzeszów
tel. +48 17 748 31 00
www.zss.rze.pl

Visiting is possible after
a prior phone call or
e-mail arrangement

The Dairy Museum is located in the Food Schools Complex, in the halls of the former School Dairy Plant. It was created by enthusiasts who have assembled a unique collection of milk centrifuges, cheese and buttermilk machines, and even a steam engine. The exposition is supplemented by documents and photographs about the history of the school and dairy cooperatives. During the European Museum Night there are many exhibitions and competitions for visitors.

MUSEUM OF TECHNOLOGY AND MILITARY IN RZESZÓW

Kochanowskiego 19 st.
35-208 Rzeszów
tel. 601 885 820
www.muzeum-techniki.rzeszow.pl

Visiting possible after phone
booking, minimum two days before
planned visit.



The museum shows the history of military technology development. It features a collection of cars, motorcycles, technical equipment, household goods and military supplies. The museum has collections of restored 1950s vintage Polish and French cars and vintage motorcycles. In addition, we can see there some household appliances and RTV equipment from the mid-twentieth century. A significant part of the collection consists of military exhibits, including collections of military equipment, as well as military gorgets and commemorative coins.

MARYSIEŃKA NUCLEAR SHELTER



Królowej Marysienieki 3 st.
35-628 Rzeszów
tel. 601 885 820

Visiting possible after phone booking,
minimum two days before planned
visit.

The "Marysienka" shelter was built during the cold war period of 1956-60 as a backup command post for the army. It is located in the basement of the house that now hosts an exhibition on the Cold War.

MUSEUM OF UNIVERSITY OF RZESZOW

al. Rejtana 16c
35-959 Rzeszów
tel. +48 17 872 12 71
www.ur.edu.pl

OPENING HOURS:

Tuesday - Thursday: 10:00-13:00
(other dates possible after phone
call arrangement)



The Museum of the University of Rzeszow, established in 2002, continues the tradition of the Museum of Education. It documents the activities of the University of Rzeszow, established in 2001 through merger of previously existing universities: the Higher School of Education in Rzeszow, subsidiary of Maria Curie-Skłodowska University in Rzeszow and subsidiary of the University of Agriculture in Rzeszow.

Its collections are dominated by historic items: memorabilia documenting the history of the university, collections, awards, distinctions and diplomas related to professors and university staff. The facility organizes temporary exhibitions, meetings, conferences and conducts educational activities.

The museum has produced the exhibition "Karol Wojtyła on a tourist trail" exhibited in the courtyard of the curia of Cracow. Another exhibition "Polish Vizier Feji" was exhibited at the Institute of the Polish Academy of Sciences in Vienna as well as at the international conference "Art and archaeology of the Old Kingdom" at the University of Warsaw.



THE DIOCESAN MUSEUM

Zamkowa 4 st.
35-032 Rzeszów
tel. 509 528 779
www.diecezja.rzeszow.pl

OPENING HOURS

Mondays: 14:00–16:00
Thursdays and Fridays:
9:00–13:00
(other dates possible after
phone call arrangement)

The Diocesan Museum of Rzeszow is a church institution established in 1997 by Bishop Kazimierz Gorny. The museum was officially opened on 22 September 1998 as part of the European Days of Cultural Heritage in Rzeszow. Collections are works of sacred art that are not in use anymore, but due to the age of the diocese (founded in the 1990s) most of its exhibits are located in the museums in Przemysl and Tarnow.

The collection, which has now become a permanent exhibition, consists of wooden sculpture monuments donated from wooden parish churches in

Lubla, Sławęcin, Łęczyn, Biecz or Trzciana. The exposition of the Diocesan Museum also features monuments of Orthodox art. Art craftsmanship department is also a part of the exhibition. The commercial art of the second half of the 19th century is represented by two bronze altar candles, donated from the parish church in Biecz and neo-Rococon candlestick, the gift from Father Pałęga.



HUNTING MUSEUM

Ks. Jałowego 25 st.
35-010 Rzeszów
tel. +48 17 853 35 46

Visiting possible after phone booking, minimum two days before planned visit.

The Hunting Museum itself is located in the building of the Polish Hunting Association in Rzeszow. Exhibits belonging to the collection showcase a wide range of wild game.

The Hunters' Association was established in Rzeszow in 1880. It is the oldest Hunting Circle in Poland. The founders of the Association were: Landowners from Rzeszów District, an official, clerk, notary, merchant and a professor. The first joint hunt, preceded by solemn Mass, was organized on Saturday, 24 January 1881, near Malawa. "Hunter's Association" was the pioneer of hunting organizations, and not only in the Rzeszow district.

PODKARPACIE MUSEUM OF POWER ENGINEERING

8-go Marca 6 st.
35-959 Rzeszów
tel. 885 757 520

Visiting possible after phone booking, minimum two days before planned visit.



Visitors can watch free exhibits from the beginning of the last century, saved from destruction by the employees of PGE Energy Distribution Company. There are, among others. Szpotański counters, ammeters, wattmeters, assemblers, clocks from an old power plant or milliamp meter from 1935. Attention is drawn to the telephone made in the Soviet Union and one of the first Polish computers - Meritum, manufactured in 1985.

The Museum is located in the seat of PGE Obrot S.A. company in Rzeszow, at 8 Marca St. 6. It was created in 2009 on the occasion of celebrations of the 100th anniversary of the Podkarpackie power industry.

WANDA SIEMASZKOWA THEATRE

Sokoła 7-9 st.
35-010 Rzeszów
tel. 17 853 20 01
www.teatr-rzeszow.pl



Wanda Siemaszkowa Theatre is the only professional dramatic theatre that has been operating in Podkarpackie Province since October 7th 1944. It plays an important role in shaping cultural life in south-eastern Poland. In addition to production, it runs Szajna Gallery organizes a significant competition - International Theatre Poster Biennale, and organizes two nationwide theatre reviews - Rzeszow Theatre Meetings and Rzeszow Carnival Meetings. The repertoire of the Theatre is varied in terms of genre and style, and thus addressed to various age groups.

Wanda Siemaszkowa Theatre actively conducts educational activities for children and the youth. Student premiers, theatre tours or theatre workshops are just some of our proposals that allow young people to get to know the theatre from the inside.

Since 1997 there operates Szajna Gallery in the Theatre - the only exhibition of works by Professor Jozef Szajna in Poland and in the world, one of the most important artists of the 20th century.

Wanda Siemaszkowa has been the patron of the theatre since 1957 - a great actress who lived in the capital of Podkarpackie Province for the last two years of her life, directing performances here and creating outstanding roles. Wanda Siemaszkowa not only guarded the national heritage, consistently promoting the Polish repertoire, but she also created a new acting style derived from Modernist dramas. On the stage of the Wanda Siemaszkowa Theatre performed numerous great actors: Adam Hanuszkiewicz, Zdzisław Kozień, Marian Łącz, Krzysztof Chamiec, Adam Fornal.

Wanda Siemaszkowa Theatre has two stages - one bigger and the other more intimate, which allows producers for a wide variety of staging. Moreover, it is equipped with facilities for hearing impaired audiences, elevators and toilets for the disabled.



SZAJNA GALLERY

35-010 Rzeszów
Sokoła 7/9
tel. +48 17 853 20 01

Visiting possible
by telephone appointment
with the curator.

On 13 March 1997, at the 75th anniversary of his birth and the 50th anniversary of creative work of the world-famous theatre producer and an artist - Professor Jozef Szajna, the adapted attic of the theatre saw the opening of the gallery of the artist's works.

It is the only exhibition of Professor Jozef Szajna's works in Poland and in the world, one of the most important artists of the 20th century. All the works that can be seen in the Gallery are gifts from Professor to Rzeszow - the city where he was born.

Jozef Szajna's body of work is shown in terms of aesthetic transformations, hence we can admire here paintings and objects, puppets, drawings and collages created during various periods of the artist's life. There are 54 works in the gallery: monumental paintings, drawings, collages, spatial compositions and stage design items from Szajna's most outstanding theatrical performances. The exhibition is a retrospective presentation of the artist's work.

Next to the works shown at many prestigious exhibitions in Poland and abroad, there are new exhibitions from the last period of his work. Since its inception, the Gallery has been a meeting place for artists representing various fields: artists, writers, musicians, theatre people.



MASKA THEATRE

Mickiewicza 13 st.
35-064 Rzeszów
tel. +48 17 862 68 08
e-mail: teatrmaska@teatrmaska.pl
www.teatrmaska.pl

"Maska" Theatre in Rzeszow is the only professional theatre in Podkarpackie Province. The theatre repertoire includes plays for children, adolescents and adults. The number of shows per year is 350 on average, and the number of viewers reaches over 55,000. It produces plays on its own stage in Rzeszow and around the entire Podkarpackie Province. The Theatre is engaged in theatre education, which introduces young viewers to the secrets of theatre art. It has a Museum of Theatre Puppets, where you can see dolls, decorations and stage designs. It is involved in the organization of such events as: "Maskarada", Festival of Theatres of Animated forms and "Sources of Memory. Szajna-Grotowski-Kantor. "

"Maska" Theatre in Rzeszow was created on the basis of The Puppet and Actor Theatre "Kacperek", a place with a long tradition.

PRZEDMIEŚCIE THEATRE

Reformacka 4 st.
35-026 Rzeszów
tel. +48 601 376 697 - Aneta Adamska
e-mail: teatr.przedmiescie@wp.pl
www.teatrprzedmiescie.pl



Przedmieście Theatre was created in 2001 on the initiative of Aneta Adamska. She quickly created a consistent vision of working on shows. In August 2006, the team changed its headquarters to Lancut, where it worked until August 2010. Since then, the theatre has been operating independently and exhibiting its art in Rzeszów. The theatre creates original plays and performances inspired by works of Polish and world literature.



„BO TAK” THEATRE

tel. 790 446 600
www.teatrbotak.pl

The BO TAK Theatre Association was founded in 2013 on the initiative of Rzeszovian actors. Their artistic ventures from the beginning enjoyed great recognition from the local audience. In 2018, the BO TAK Theatre underwent a metamorphosis, the composition of the board and the organization's statute changed. In a refreshed formula, the BO TAK theatre performs its shows on the stage of WDK in Rzeszów, providing excellent entertainment to the residents of the city and the entire province. The latest performances of this theatre group are „Die Laughing” by Paul Elliot, directed by Mirosław Bieliński, and „Laughing Forbidden” by Mir Gavran, directed by Henryk Adamek. Both pieces lead to tears ... of laughter. Actors from Rzeszów and invited artists from Krakow and Warsaw present themselves on the boards.

BWA

Jana III Sobieskiego 18 st.
35-002 Rzeszów
tel. +48 17 853 38 11
e-mail: sekretariat@bwa.rzeszow.pl



The Artistic Exhibitions Bureau in Rzeszów was established in 1962. It was established as an institution expressing the patronage of the state over culture by the then Provincial National Council. The purpose of the gallery is not only to showcase works of art but mainly to organize the cultural life of the artistic environment.



PHOTO GALLERY OF THE CITY OF RZESZOW

3 Maja 9 st.
35-030 Rzeszów
tel. 17 748 11 05
e-mail: fotogaleria@gf.erzeszow.pl
www.fotogaleria.erzeszow.pl

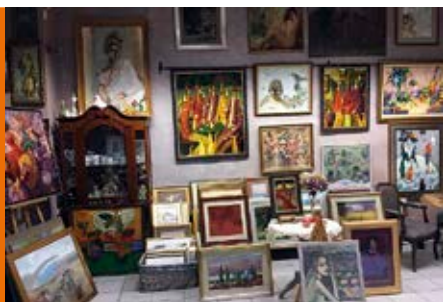
OPENING HOURS:

Monday - Wednesday: 9:00–17:00
Thursday - Friday 9.00–19:00

Photo Gallery of the City of Rzeszow was established in 1992. Apart from presenting the works and profiles of photographers from all over the world, it documents the life of the inhabitants of Rzeszow. The vast archive contains negatives and photographs dating back to 1886, which constitute interesting and unique academic material for the academic community. Since 1993, the youngest among photographers have been able to present their first works at the Debiuty Gallery. It cooperates with other galleries and institutions from Poland and abroad.

BELLART ART GALLERY

Mickiewicza 13 st.
35-064 Rzeszów
tel. 600 420 011, 17 853 49 86
e-mail: kontakt@bellartgaleria.pl
www.bellartgaleria.pl



“BellArt” Art Gallery was created in 2000 due to passion for art. The main purpose of the Gallery’s operation is to present contemporary art, to propagate the works of well-known and respected artists of the Podkarpackie Artistic Circles, as well as those from other regions of Poland as well as from abroad, and make it all available to a broader audience.

Since its inception, the Gallery has been organizing individual exhibitions by well known painters, graphic artists, sculptors, as well as promoting young talented graduates of Fine Arts Schools entering the art world.

The gallery is a meeting place for both artists and art lovers. It has a large circle of regular visitors and recipients of monthly exhibitions.

In addition to painting, sculpture, ceramics and artistic glass, it offers stylish furniture and unique decorative items.

NIERZECZYWISTA GALLERY

Matejki 10 st.
35-064 Rzeszów
tel. 605 953 732
www.rsf.rzeszow.pl
www.facebook.com/RSF.Rzeszow



The Rzeszow Photography Association is a group of photography lovers, professionals and amateurs, who have been cooperating for more than 10 years to develop their skills and promote the art of photography among the inhabitants of Rzeszow and residents of "closer and further surroundings". It collaborates with associations and photographers from Poland, Ukraine and Slovakia. It organizes exhibitions, including open-type ones, where residents of Rzeszow can present their photos, as well as open air exhibitions, displays, workshops and presentations. The Association is also in charge of Nierzeczywista Gallery - the seat of the association, the RSF photo studio, which is the venue of Monday's photo shoots, open to the public, photographic operations, displays, exhibitions and meetings.



CINEMAS

HELIOS

al. Powstańców Warszawy 14, Rzeszów, 17 854 00 64
al. J. Piłsudskiego 44, Rzeszów, 17 777 12 90
www.helios.pl

CINEMA ROUND THE CORNER CAFÉ

Świętego Mikołaja 6 st., Rzeszów, 17 867 41 73
www.kinozarogiem.pl

MULTIKINO

al. Kopisto 1, Rzeszów
www.multikino.pl

ZORZA

3 Maja 28 st., Rzeszów, 17 853 26 37
www.kinozorza.pl





BREAKOUT DAYS

Breakout Days is a music festival created in memory of the outstanding, timeless artist, Tadeusz Nalepa. His work set a new direction in music, breaking the aesthetic constraints imposed in the 1970s.

The music of the Breakout's band created by Tadeusz has been electrifying listeners for years, and its name has become a recognizable brand in many countries. Breakout is also a brand that in Poland is associated with Rzeszów.

The festival aims to commemorate the work and character of Tadeusz Nalepa, promote it among the inhabitants of Rzeszów, engaging young artists who are inspired by the Breakout band. The event is open to the wider community; however, we aim to cultivate and honour the work of Tadeusz Nalepa among the inhabitants of Rzeszów.

Interdisciplinary activities: contests, concerts, seminars, will allow you to confront the music of the Breakout band with modern interpretations of musical trends, such as blues and rock. The festival is attended by debutants, professional musicians and participants of competitions who exchange their experience.





„REGGAE ON THE WISŁOK”

The first edition of the event called „Reggae on the Wisłok – 5 years of the Rzeszow House of Culture” took place on June 14, 2015 in the Park of Culture and Recreation at Rzeszow Boulevards. The stars of the memorable evening were two well-known singers – the legendary Ghetto Priest from Great Britain and the popular Mesajah from Poland. Concerts were accompanied by thematic music and handicraft workshops related to reggae culture, as well as entertainment and games for children.

The audience of thousands and the positive reception of the first edition of the event made „Reggae on the Wisłok” quickly become one of the most interesting cultural proposals aimed at Rzeszow residents and reggae fans from all over Poland. During the next events, participants from all over the country had the opportunity to see and hear live leading representatives of the Polish and international reggae, dub and dancehall scenes, such as: Jamal, Vavamuffin, Dark Angel, Radikal Guru, Dreadsquad, Taboo and Junior Stress. The previous editions were also enhanced by interesting accompanying initiatives, such as all-night dance Afterparties, which took place twice in the Vinyl music club, and Night-skating Rzeszow in reggae climates, i.e. a night-time roller-skating ride through the streets of the city.





TONY FESTIVAL

The Tony Festival is a musical celebration that takes place in Rzeszów in summer and is an original project of Estrada Rzeszowska. Various music genres are presented at the festival, including: indie and art pop, r&b, electronic, industrial, synth pop and techno. The event connects music lovers and allows for its intimate reception in the atmospheric interiors of the Art Exhibitions Office. So far, the Tony Festival has played host to: Sanah, Rosalie, Agim, Zamilska, Perfect Son, Niemoc, Coals, Erith. In addition to the highest sound quality, the Tony Festival stands out for its attention to the visual side of the event and is a feast for the ears and eyes.





RZESZOW CARPATHIA FESTIVAL

„Rzeszow Carpathia Festival” is a meeting place for young vocalists and music bands from all around the world.

The first edition of the Festival took place in 2005. The aim of the Festival is to promote talented young artists and to present the diverse musical culture of Europe and the world. The initiator of the Festival is Anna Czenczek – Director of the „Rzeszow Carpathia Festival” and Director of the Centre of Vocal Art in Rzeszow. It took place for the first time on 1-3 May 2005 under the name of the 1st National Polish Song Festival Rzeszow 2005, and participants could compete in three categories: legionary song, popular song and original song. From the second edition, the Festival has had international status and hosted artists from such countries as: Norway, Latvia, Lithuania, Ukraine, Russia, Kazakhstan, Azerbaijan, Israel, Moldova, Romania, Bulgaria, Serbia, Hungary, Slovakia, Czech Republic, Germany, France, Italy and Poland. From the 4th edition, a requirement to take part in the qualifying is to present an original song.

materials: Estrada Rzeszowska





WORLD FESTIVAL OF POLISH FOLKLORE GROUPS

Every three years, traditionally in July, the World Festival of Polish Folklore Groups takes place in Rzeszow, integrating Polish diaspora from different continents. So far, over 250 different groups have taken part in the festivals, and some of them have participated many times. The most numerous groups were from the USA, Canada, France and Great Britain. There were also groups from Germany, Sweden, Denmark, Switzerland and Romania, as well as from far away Australia, Brazil, Argentina and Kazakhstan. Since the beginning of the nineties, Polonia teams from Ukraine and Lithuania have been increasingly represented.

Each time the festival begins with a beautiful, colourful procession of Polish groups dancing and singing through the streets of the city. The whole event will be crowned by an impressive gala concert that will involve all the Festival teams.





RE: RZESZÓW FESTIVAL

A NEW ILLUMINATED
SUMMER FESTIVAL
ON THE MAP OF POLAND

Two stages, a dozen or so leading Polish stars and a unique combination of music and light - this is the recipe for the summer festival that takes place on the Vistula Boulevards and has the ambition to become a new icon of Rzeszów. On an August weekend, Rzeszów Boulevards are filled not only with the music of the greatest contemporary stars of pop, alternative, hip-hop, rock and electronic music, but also illuminated by the Park of Lights. RE: RZESZÓW FESTIVAL reflects the dynamic character of the city and the region, highlights its best qualities, is full of energy, is bright and inspiring. The festival stands to become one of the most prominent city brands and attract fans of good music not only from the region but also from all over Poland.



DOPE FEST RZESZÓW

Another summer music festival in Rzeszów on the map of hip-hop festivals, taking place in the square of the Millennium Hall gallery in Rzeszów. The festival is divided into two days due to the large number of artists invited.





MASQUERADE

The International Theatre Festival of Animated Forms MASQUERADE is a puppet theatre festival organized by the Maska Theatre since 2010. During the festival, viewers have the opportunity to see a variety of performances in which the main form is a doll. The Maska Theatre invites you to Rzeszow for performances of the best puppet theatres from all over Poland and from around the world. We present performances for children and young people on both stages of the Maska Theatre, as well as in the open air and in partner institutions. These are the best performances of this form of theatre, winning numerous awards at Polish and international festivals, with performances appreciated by critics and the public, which were a subject of discussion during recent seasons. Every year, the program of the International Theatre Festival of Animated Forms MASQUERADE is enriched by accompanying events, such as meetings with artists, workshops, exhibitions and concerts.

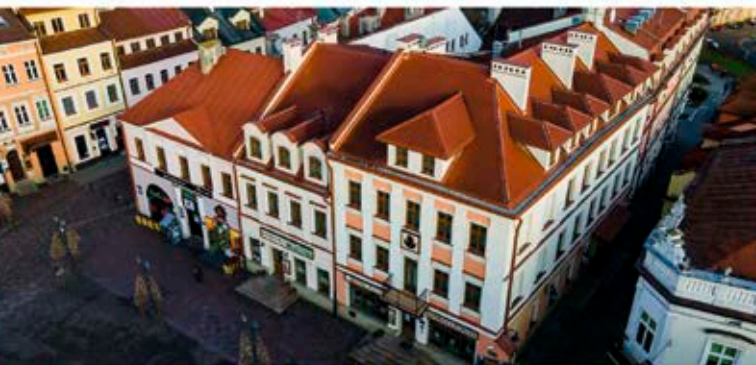
SOURCES OF REMEMBRANCE SZAJNA – GROTOWSKI – KANTOR

Scientific and artistic festival „Sources of Remembrance Szajna - Grotowski - Kantor”, a project dedicated to Jerzy Grotowski, Tadeusz Kantor and Józef Szajna, three outstanding figures of world theatre who have their pedigree in Rzeszow and Podkarpacie. The legacy of the three great reformers of the theatre is still vivid and inspiring for the next generations of directors, actors, theatre critics, artists – visual artists. The festival is organized by the Maska Theatre in Rzeszow and Przedmieście Theatre.



ACCOMMODATION





OUR HOTEL:

- ✓ Location in the very centre of Rzeszów
- ✓ Ideal place for business meetings and private events
- ✓ Restaurant and bakery „Esencja” invites you to enjoy its own cuisine and a unique atmosphere
- ✓ Cocktail Bar
- ✓ Fitness Club, Steam sauna
- ✓ 3 halls: Restaurant, Banquet and Underground
- ✓ One of them connected to the underground tourist route „Rzeszowskie Piwnice”

WWW.HOTELAMBASADORSKI.PL

ul. Rynek 14, 35-065 Rzeszów



repcja@hotelambadorski.pl
[facebook/HotelAmbadorski](https://facebook.com/HotelAmbadorski)



RESERVATIONS:
17 250 2444



O nas | About us

Usytuowany w **samym centrum Rzeszowa** | Jeden z najlepszych hoteli **w Polsce**
140 indywidualnie zaprojektowanych pokoi | Połączenie staropolskiego stylu i luksusu
8 sal konferencyjnych | Organizacja wydarzeń dla nawet **600 osób**

Located in the very center of **Rzeszow** | One of the best hotels in Poland
140 individually designed rooms | a combination of old Polish style and luxury
8 conference rooms | Organization of events for up to **600** people



Mikołaja Kopernika 12
35-001 Rzeszów



+48 17 250 00 50



info@bristol-rzeszow.pl



Hotel Blue Diamond Active SPA****

is a luxury hotel on the map of Subcarpathia, connecting relaxation and business in designer space created in order to meet the needs of the most demanding customers.

SPA & Wellness

Relaxation zone

Beach area "Yacht Club"

Restaurant "Simple"

Occasional events

Business events



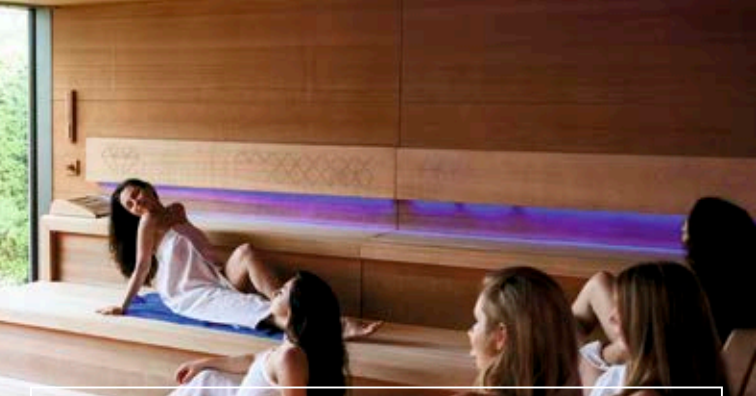
+48 17 77 22 666



repcja@bluediamondhotel.pl



Nowa Wieś 414, 36-001 Trzebowno



Relaxation Zone at the Blue Diamond Hotel

Discover the land of relaxation and peace. Take a break from the hustle and bustle of everyday matters and feel the real pleasure of being in the here and now. The year-round swimming pool, jacuzzi, tepidarium or cyclical sauna sessions will provide you with the rest you need.

Pool zone

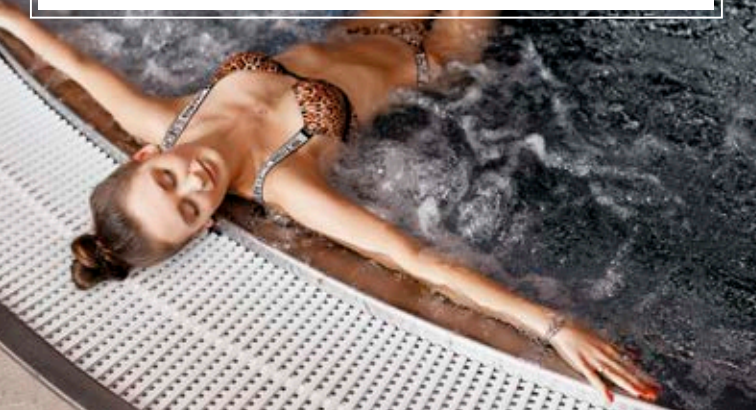
Sauna zone

Steam and brine bath

Sauna nights

Tepidarium

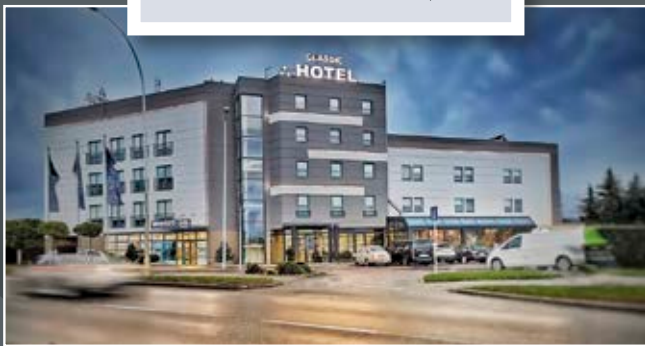
Gym and fitness



Classic



Hotel i Restauracja



Hotel Classic is situated 3 km from the Main Market Square and 10 km from the airport in Jasionka. Our guests have at their disposal 48 comfortably equipped rooms with bathrooms and 2 suites with jacuzzi. On the premises: restaurant, conference rooms, 24-hour shop and free monitored parking.

Classic Restaurant attracts with delicious Old Polish and Czech cuisine and it is also famous for its fresh sea fish dishes such as: turbot, Baltic salmon from own catch and cod.

In the restaurant are also organized occasional parties.

You're welcome!



HOTEL CLASSIC, ul. Armii Krajowej 32, 35-327 Rzeszów
tel.+ 48 17 857-77-47, mob. +48 600-299-611, e-mail: biuro@hotelclassic.pl

www.hotelclassic.pl



Debinówka

Guest House

A cosy place with home atmosphere,
delicious cuisine and peaceful surroundings.



ul. Jana Pawła II 95, Rzeszów



+48 17 221 91 97



biuro@debinowka.pl



www.debinowka.pl



★ ★ ★ ★ grand hotel

BOUTIQUE



Zlokalizowany **50m** od rynku Starego Miasta

Nowoczesne wnętrza urządzone w **boutiqowym** stylu

84 komfortowe **pokoje** | **5** kompletnie wyposażonych **sal konferencyjnych**

Strefa Wellness | Jeden z najlepiej ocenianych hoteli w regionie

Located **50 meters** from the old town square | **Boutique** interiors in a traditional style

84 comfortable rooms | **5** fully equipped conference rooms

Wellness zone | One of the best rated hotels in the region



Dymnickiego 1A
35-030 Rzeszów



+48 17 250 00 00



info@grand-hotel.pl



Hilton Hotel Garden Inn Rzeszów

is located just a few minutes from the Old Town.

The hotel features comfortable, air-conditioned rooms, spacious conference rooms which are fully adapted for the organization of various meetings and events. Extras include a safety deposit box, a tea and coffee set, ironing facilities and a hairdryer. The hotel also offers free WiFi. In the hotel there is a restaurant The Garden Grille & Bar, a fitness center and a business center. Open 24 hours The Shop[®] offers snacks and drinks.

The hotel offers parking and underground garage with a charging station for electric cars, a complimentary printing services, a shoe shine stand and self-laundry service. Guests can enjoy their time in Cigar Room.

Hilton Garden Inn Rzeszów is a part of the Millenium Hall shopping center, which houses over 250 stores, coffee shops, restaurants, cinema, fitness club and Chocolate Factory. The distance from the Rzeszów Airport is 15 km, while the Train and Bus Stations are 2,5 km away.

Al. Majora Wacława Kopisto 1, 35-315 Rzeszów, e-mail: reservation@hgi.rzeszow.pl, tel. +48 17 77 00 000





HOTEL HOLIDAY INN EXPRESS RZESZOW AIRPORT

Begin your journey with a 3-star hotel located just 2 minute walk from the Rzeszow Airport, next to the G2A Arena and 12 km from the city centre. We are a perfect choice if you are flying in or out on a business trip, planning a holiday abroad or just visiting Rzeszow and nearby cities. Holiday Inn Express Rzeszow Airport has 120 rooms, restaurant, lobby bar, conference space and parking at your disposal.

Enjoy your stay with us!

Reservation:
17 781 00 00
fo@hiexrzeszow.pl
hiexrzeszow.pl



AN IHG® HOTEL
RZESZÓW AIRPORT

HOTEL PREZYDENCKI

Hotel Prezydentki**** in Rzeszów is a subtle blend of modernity and tradition. Operating in the market for over 20 years, it has hosted, inter alia, Presidents of the Visegrad Group of countries., and people from the world of politics and business. After redevelopment in 2011, the hotel gained a fourth star.



The convenient location makes the hotel an excellent base for the both business clients and sports enthusiast. The facility is located near cycling and walking routes on the Wisłok River, only a 10-minute walk to the town square, 100 m from the Millennium Hall shopping and cultural complex.

Guests can use the intimate SPA Zone and two atmospheric restaurants specializing in Polish and regional dishes.

Let's meet in the Prezydentki !

Hotel Prezydentki
Podwisłocze 48, 35-309 Rzeszów

Tel.: +48 17 860 65 00 | recepca@hoteleprezydentkie.pl | www.hoteleprezydentkie.pl





SCHRONISKO PTSM

A youth hostel
PTSM „ALKO”
35 – 061 Rzeszów, Rynek 25
tel. +48 17 85 344 30, 781 422 152
www.ptsm-alko.pl
schronisko@ptsm-alko.pl

Open all year round
Capacity: 50

GASTRONOMY



SPORT'S 
Bar-B-Q
AMERICAN
☆☆☆ **CUISINE**




steaks



burgers 



Al. W. Kopisto 1, Rzeszów
Millenium Hall, level 1



reservations and orders: 667 106 105
www.sportsbarbbq.pl  /sportsbarbbq



**WE CARESS
YOUR
SENSES!**



**RZESZÓW
RYNEK
16/6**

 /cocktailculturerzeszow
 /cocktailculturerzeszow



COCKTAIL CULTURE

**COCKTAIL CULTURE IS A UNIQUE PLACE ON
THE GASTRONOMIC MAP OF RZESZOW.**

The property is located at the end of the corridor of the ground floor of the tenement house on the Market Square, which brings to mind fashionable Speakeasy type places.

Cozy, atmospheric interior, a large selection of alcoholic drinks and very interesting menu cards allow you to enjoy delicious cocktails and the highest quality of Specialty coffee. Professional service will certainly help you make the best choice, and all that is left for You is to celebrate the moment.

Cocktail Culture - We caress your senses!

DZIARSKI BARISTA



Centrally located in Rzeszow's downtown district, Dziarski Barista offers a comfortable environment for everyone. Come and enjoy our selection of homemade sandwiches and cakes. Whether you're looking to relax over a cup of coffee or grab a quick bite to go, the Dziarski Barista is for you. Our mission is to serve the highest-quality coffees, food and baked goods in an atmosphere that meets the needs of customers who are in a hurry as well as those who want a place to relax and enjoy their beverages.

Esencja

Rynek 14 Rzeszów



cocktail bar
wine bar
restaurant
cafe
vip room
banquet hall



weddings
baptisms
birthday parties
communion
conferences
catering
company parties




Rynek 14, Rzeszów - Reservations: +48 692 444 077
Events organizations: +48 692 444 512

 esencjarzeszow  esencjarzeszow
www.esencjarzeszow.pl



KUCHNIA
FOLK
LOKALNA



Kuchnia restauracji folk to kuchnia wyjątkowa.
Inspirowana smakami i tradycją regionu.
Oparta na najlepszych lokalnych produktach.
Sygnowana przez jednego z najlepszych szefów kuchni w regionie
Janusza Pyrę.

The cuisine of folk restaurants is unique cuisine.
Inspired by the tastes and traditions of the region.
Based on the best local products.
Signed by one of the best chefs in the region
Janusz Pyra.

#restauracjafolk



@RestauracjaFolk



17 250 00 12



Rynek 20-23





GOŚCINIEC

Regional cuisine



These ideas are close to use:

**slow-food
simply, locally, naturally**



Come and visit us in The „Gościniec*” Inn!
Przemysłowa 3, Rzeszów

*[*the name comes from a word: “gościnny” in Polish meaning “hospitable”]*



gosciniiec.rzeszow.pl



 RZESZÓW, UL. 3-60 MAJA 8

ORDERS 17/853 20 06



grota
RESTAURANT / PIZZA / PUB



GROTA_RESTAURANT



/GROTARZESZOW



WWW.GROTA-RESTAURANT.PL

GROTA RESTAURANT

is located in the very centre of Rzeszów in representative 3-go maja Street. Pub, pizzeria and restaurant, all in one. It's the perfect place for both - corporate events and intimate, small meetings with friends and family.

Grota's main Focus is put on traditional Polish cuisine but fans of Italian flavours will also find something for themselves here. We'll make every effort to match our offerings to your needs and requirements.

HABANA

SPORT'S BAR-B-Q

ORDER ONLINE



RZESZÓW | 3 MAJA 7 | 881 501 100

 /HABANASPORTSBBQ

THE garden

GRILLE & BAR

The Garden Grille & Bar restaurant

is a place where you can enjoy the taste of excellent polish and international cuisine at the highest level.

A comfortable design and friendly, professional and discreet staff allow you to relax after a hard day. It is also a perfect place for business meetings as well as with family or friends. The bar located on the entresol has 45 seats and offers a wide selection of wines and spirits. While relaxing by the fireplace after a hard day you can taste our specialties prepared by professional bartenders.

The restaurant is open daily from
4:00 P.M. to 10:00 P.M.

The bar is open daily from
6:00 P.M. to 11:00 P.M.

Al. Majora Waclawa Kopisto 1, 35-315 Rzeszów
e-mail: reservation@hgi.rzeszow.pl
tel. +48 17 77 00 000



Chef - **Kamil Trzeciak**





HINDI

RESTAURACJA INDYJSKA

Authentic taste of India

Top Indian Chefs


Traditional Indian recipes


Original spices directly from India

Lunch Menu


Week full of special offers



 ul. Mickiewicza 19, 35-064 Rzeszów

 @restauracjaindyjskarzeszow

 666 400 513  @hindirestauracja

 biuro@indyjskahindi.pl

 www.indyjskahindi.pl

Italia Da Bere

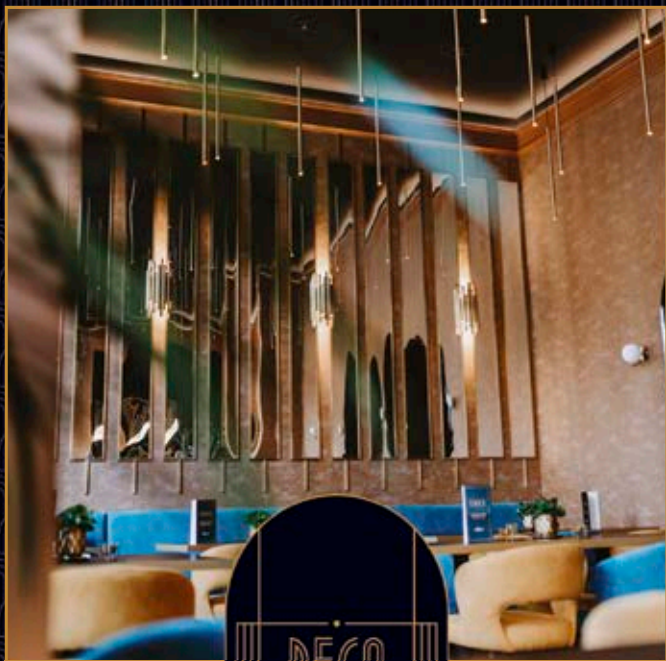
WINIARNIA



Original wines
Italian quality
Italian flavor

Rzeszow, ul. Rynek 25

tel. 735 - 412 - 867



A café with soul, decorated in Art Deco style, located in a historic tenement house in the very heart of Rzeszów. heart of Rzeszów, near the Lubomirski Castle. It is a place which no gourmand should miss due to for the sake of serving delicious cakes and desserts, accompanied by freshly brewed coffee and the best quality loose tea. quality loose-leaf tea.

Deco is the perfect place to stop for strollers, on their way to the multimedia fountain or Multimedia Fountain or the Market Square. It is one of the few cafes in Rzeszów where you can drink good wine, and the appearance of the cakes will satisfy not only the stomach, but also the eyes. Thanks to the beautiful interior you can feel really special.



ul. Zamkowa 2, 35-032 Rzeszów
tel. 733 337 389



Polish
cuisine
with a modern
twist

Imagine a place where you can indulge in unique culinary pleasures.
A place that puts you in a great mood with its decor.
A place where chefs and waiters take care of your palette and
perfectly selected music emphasizes the uniqueness of flavours
even more.

This is what Restauracja Konfitura is about.

*Feel
Invited*

Restauracja Konfitura

ul. Słowackiego 8

35-060 Rzeszów

+48 17 784 44 40

kontakt@restauracjakonfitura.pl



Znajdź nas również na:





Kozlovna

Rynek 9 Rzeszów



The original


CZECH TASTE



Phone: +48 787 888 575

Rynek 9, 35-064 Rzeszów

 KozlovnaRzeszów

 kozlovnarzeszow

www.kozlovnarzeszow.pl



La Sueva



Rzeszów, ul. 3-go Maja 10, tel.: 504 167 504, 17 853 48 48
www.lasueva.pl

LIZBONA

O'BELLA CIAO

RESTAURANT

CAFÉ

BAR



RESERVATION: 791 001 730 | 3 MAJA 7 RZESZÓW

LORD JACK



Restaurant & Apartments

YOUR PLACE FOR A UNIQUE MEETING



COMMUNION
WEDDINGS
BAPTISMS
BIRTHDAYS



SCHOOLING
CONFERENCES
BANQUETS

Rynek No. 3-4 Rzeszów
Reservations +48 886 777 996



17 862 04 01



/noraaktorarzszow



Rynek 8
Rzeszów



NORA
aktor



ORO RISTORANTE

PIZZA | PASTA | WINE

www.ororistorante.pl

**AUTHENTIC
ITALIAN
CUISINE**

tel. 17 863 00 77

Rzeszów, ul. Krakowska 11c

The image features two paninis at the top, one with salami and arugula, the other with ham and arugula. Below them is a large pepperoni pizza on a wooden board, garnished with fresh basil. The background is a warm, golden-brown color with faint architectural patterns. The text 'Panini' and 'Pizza al taglio' is written in a white, cursive font, overlapping the food.

Panini
Pizza al taglio

A stylized graphic of the Italian flag (green, white, and red) is positioned above the brand name.

ORO
I T A L I A

Rzeszów, ul. Jana Matejki 6

patio
RESTAURACJA

Z pasji... do kuchni

Patio...

to elegancka i klimatyczna restauracja mieszcząca się w samym sercu obiektu Grand Hotel Boutique.

Patio... is an elegant and atmospheric restaurant located in the heart of the Grand Hotel Boutique.

Restaurant Week...

wielokrotnie nagradzana w każdej kategorii!

Restaurant Week... award-winning in each category!

Poleca
SzeF Kuchni:

Kamil Huczek



#patiorzeszow

ul. Dymnickiego 1A

17 250 00 79



@PatioGrand

Pijalnia
wódki i piwa

CITIZEN
EXPERIENCE
THE JOURNEY
TO THE COMMUNIST
ERA OF POLAND!




www.pwip.com.pl

~ Rzeszów, ul. Mickiewicza 4 ~



 17 852 20 19

 /PiwiarniaWarkaRzeszow

 Joselewicza 2



PLACE FULL OF PASSION FOR COFFEE

Place where You can play some board games,
read a book in an armchair or... on the swing!

SPECIALITY COFFEE. cakes made on the spot, various teas
and warming or refreshing drinks. **HEALTHY BREAKFASTS AND LUNCHES.**

In our offer i.a. Coffee nerd set - board of three different coffees.





ESTD ★ 2015

RDZA

WHISKEY & BOURBON
— HOUSE —

WHISKEY & COCKTAIL



RYNEK 16
RZESZÓW



BURGER & PIZZA

RESERVATIONS: 883 656 488

RDZA.RZESZOW.PL

  @RDZARZESZOWPL



RESTAURACJA SMACZNEGO

SmaczneGO Restaurant is a new version of a small bistro, opened by Maciej Fabisiak who is passionate and keen on cooking Maciej Fabisiak. The restaurant has a room for 80 people, designed by the owners. A large amount of greenery accompanied by wood and metal makes the place cozy and industrial at the same time industrial atmosphere. The menu served in SmaczneGO is an authorial reflection of what is most important to the owners - tasty, original combinations of traditional cuisine with other cuisines of the world, with respecting the principle of Zero Waste.

The menu changes three times a year, i.e. Spring/Spring, The menu changes three times a year, i.e. Spring/Spring, Summer, Autumn/Winter, and consists of hot and cold starters, salads, soups, meat and vegetarian. From Monday to Friday, a different set lunch is served every day.

Location of the restaurant on the outskirts of the city, not far from the A4 freeway, allows for easy access, and to escape from the crowds in the city center. SmaczneGO is a place worth visiting with family, friends or on the occasion of any other special event. This is a restaurant definitely worth recommending.



ul. Wrzesława Romańczuka 10, 35-302 Rzeszów
tel. +48 533 301 616, Rezerwacje grupowe: 733 332 063



Kawa...

prawdopodobnie najlepsza
kawa w Rzeszowie :)

*Coffee...
probably the best
coffee in Rzeszow :)*



Śniadania...

jeśli szukasz miejsca
w którym miło rozpoczniesz
dzień - dobrze trafiłeś :)

Breakfasts...

*if you are looking for
a place to start your day
in nice way -
you've found it :)*



Ciasta..

to nasza pasja!
Kawiarnia Stary Piernik
to prawdziwa gratka
dla miłośników pysznych
wypieków!

*Cakes...
are our passion!
Stary Piernik Cafe is a place
where lovers of delicious
pastries will have
a real feast!*



#starypiernik



@kawiarniastarypiernik

17 250 00 78



ul. Kościuszki 9



TOWINO



TOWINO

Rzeszów

ul. Kopernika 3/1

www.ToWino.pl

Regional wine

Draft wine

Aged cheeses

Snacks for wine

Handicraft





RESTAURANT · WINEBAR

A place where you can enjoy the company of your friends, good wine, food and music. We are inspired by cuisine from around the world and we don't forget about local traditional food.

📍 ul. 3 Maja 9

BE WITH US AND LET US HOST YOU

📷📱 restauracja.winadajcie

🌐 www.winadajcie.pl

THE BEST RESTAURANT IN POLAND!

by Restaurant Week Polska 2021



ZEST
enjoy it more



BOOK A TABLE 📍 790 331 499 RZESZÓW, RYNEK 19

📱 ZEST.RZESZOW

VISIT RZESZÓW



FLIXBUS



Free Wifi
included



Plug sockets
on board



Extra large
legroom



Toilet
on board



Luggage
included



Flexible
Booking

Discover Rzeszów with FlixBus!

With the largest network of affordable and green mobility, FlixBus is the easiest way to travel the world!



Check out our bus routes network in 35 countries around the world and book your ticket in FlixBus App or at www.flixbus.com.



G2A ARENA

Convention and Exhibition Centre
of the Podkarpackie Voivodeship



**Book a date
for your event!**

+48 790 707 384

+ 48 533 391 412

sprzedaz@g2aarena.pl

www.g2aarena.pl

Jasionka k. Rzeszowa

Meet our space

- **Conferences • concerts • congresses**
- **fair • exhibitions • galas • banquets**
- **occasional events • workshops**



Kino Zorza was established in 1956. It is a cinema in which the viewer, apart from commercial films, will find as well ambitious adaptations awarded at many international festivals. Zorza Cinema is run by the Regional Film Foundation. It belongs to the Studio Cinemas Association. It is the most recognizable digital cinema in Rzeszów and shows films in the latest three-dimensional technology with the Dolby Digital Surround EX sound system. There are three screening rooms in the cinema: the green (518 seats), the red (44 seats) and the blue (44 seats). Monthly meetings are held here such as "Babski Wieczór" (Ladies Night), "Zorza dla Seniora" (Zorza for Seniors) , "Zorza w Ciemno" (Zorza Sight Unseen) and DKF ZORZA (Movie Debating Club). During the summer holidays, there are organized "in the open air" films screenings in the cinema's backyard and the series called "Niezuważone perły" (Unnoticed Pearls), during which viewers can watch outstanding film adaptations. The "Via Carpatia Film Festival" has also been held in the cinema for several years. During this event are shown films from countries located along the Via Carpatia communication route. In 2021, the cinema won the 1st competition "Seniors-Friendly Place" organized by the City Hall of Rzeszów, the Association "Creative Senior in Rzeszów" and the Rzeszów Council of Seniors.





RIKSZA
-Drive according
to an original idea

**Do you want to see the city from a different,
interesting perspective?**


Anyone who would like to use my
services should go to the Old Market Square,
near the promenade.

www.riksza.rzeszow.pl
kontakt@riksza.rzeszow.pl

I offer:

- a tourist ride, sightseeing,
- rickshaw ride around Rzeszow,
- rickshaw ride to all kinds of special events.

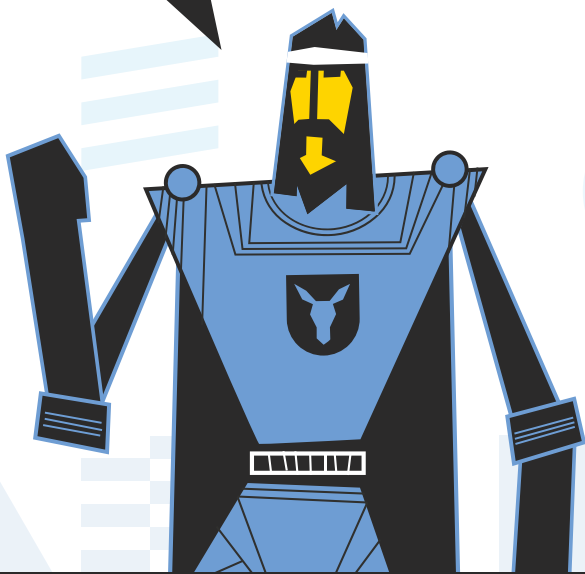
My clients can order by phone. In the city
or for a given date. is is enough to call
607 111 294
and indicate a specific place.



**You can pay for journeys in cash,
by card or by phone.**



Discover interactive Rzeszów
by traversing underground corridors!



Rzeszowskie Piwnice Rynek street 26, Rzeszów

more information at: rzeszowskiepiwnice.pl

 **@Rzeszowskie.Piwnice**

 **@rzeszowskie_piwnice**

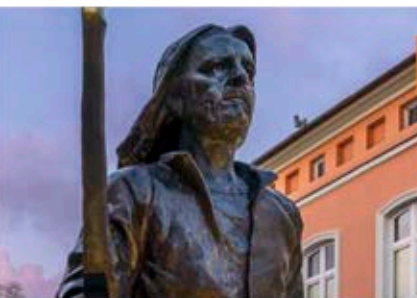


DISCOVER RZESZÓW Z MOBILE TOUR GUIDE

VISIT RZESZÓW APP
available on smartphones



CHOOSE YOUR PATH:



MONUMENTS AND ATTRACTIONS

FAMOUS CITIZENS

RZESZÓW FOR EVERYONE

EDWARD JANUSZ'S PHOTOS

ALL HOTELS, RESTAURANTS
AND ENTERTAINMENT IN ONE PLACE

WWW.VISITRZESZOW.PL



CALENDAR OF CULTURAL AND SPORTS EVENTS

JANUARY

- ▶ The Procession of the Magi
- ▶ Anniversary of the granting of the Rzeszów city charter
- ▶ The final of the Great Orchestra of Christmas Charity

MARCH

- ▶ Birthday of the Bedtime Stories Museum from the collection of Wojciech Jama

APRIL

- ▶ National Festival of Actors', Film and Musical Song „Piosenka w Meloniku” („A song in a bowler hat”)
- ▶ PKO Rzeszów Half Marathon
- ▶ PKO Half Marathon Relay

MAY

- ▶ Paniaga Day (on ul. 3 Maja)
- ▶ Juwenalia
- ▶ Festival of Animated Form Theaters „Masquerade”
- ▶ European Night at the Museum
- ▶ Science Explorers Picnic

JUNE

- ▶ Reggae on the Vistula river
- ▶ „Consavia” Brass Band Festival (every two years)
- ▶ Culturalia
- ▶ POWER of the explorers – Rzeszów Picnic of Science and Technology
- ▶ East of Culture – European Stadium of Culture
- ▶ DOPE FEST Rzeszów

JULY

- ▶ Birthday Toast for Tomasz Stańko
- ▶ World Festival of Polish Folk Groups in Rzeszów (every three years)

AUGUST

- ▶ The Rzeszów Rally
- ▶ „Sources of Memory. Szajna-Grotowski-Kantor”
- ▶ Carpathia Song Festival - International Rzeszów Festival
- ▶ Rock Night
- ▶ RE: Rzeszów Festival

SEPTEMBER

- ▶ European Cuisine Cultural Heritage Days
- ▶ Rzeszów Breakout Days
- ▶ „Karpaty na Widelcu” (‘Carpathians on the Fork’) Festival

OCTOBER

- ▶ The Rzeszów Marathon and the Marathon Relay
- ▶ Pope’s Day
- ▶ The Tony Festival

NOVEMBER

- ▶ Independence Run
- ▶ Festival of Dance Groups „O Laur Rzecha”

DECEMBER

- ▶ Santa Claus in the Rzeszów Market Square
- ▶ Christmas Town
- ▶ Christmas Eve at the Rzeszów Market Square
- ▶ New Year’s Eve at the Rzeszów Market Square

More info at

www.erzeszow.pl
www.estrada.rzeszow.pl



PRACTICAL INFORMATION

TOURIST INFORMATION

Podkarpackie Regional Tourist
Organization
Rynek 26, 35-064 Rzeszów,
tel. +48 17 852 00 09

Polish Tourist-Touring
Association
J. Matejki 2,
tel. +48 17 853 67 55

Rzeszów City Hall, City Brand
Department, Economic Coopera-
tion and Tourism
Rynek 11, 35-064 Rzeszów
(2nd floor) - you can get a guide,
information leaflets, questring

HELPLINE +48 1 77 88 99 00

www.erzeszow.pl

RZESZOW CITY TRANSPORT

rtm.erzeszow.pl
einfo.erzeszow.pl

TAXI

BOLT
Euro Taxi - 17 196 26
FreeNOW
Idea Cars Taxi - 17 197 77
iTaxi - 737 737 737
Radio Taxi - 17 191 91
RES taxi - 17 196 66
Super Radio Taxi - 17 196 22
Taxi Rzeszow Van for 6 people
- 600 236 937
Taxi-Bus - +48 17 221 93 94
Taxi (luggage) - +48 17 853 47 77
UBER

TAXI STANDS

pl. Dworcowy
pl. Farny
al. Piłsudskiego (Voivodship Office)
pl. Wolności
ul. Targowa
ul. Naruszewicza (Specialist Hospital)
ul. Lisa Kuli
ul. Hetmańska (43)
ul. Dąbrowskiego (Institute of Music)
ul. Langiewicza / ul. W. Stwosza
ul. Bohaterów
al. Witosa / ul. Lewakowskiego
ul. Dukielska
ul. Marszałkowska
ul. Warszawska
ul. Krakowska (2)
ul. Krakowska (12a)
ul. Okulickiego (9)
ul. Ofiar Katynia
ul. Podwiślocze (40)
ul. Cicha
al. Rejtana / ul. Paderewskiego
al. Niepodległości / ul. Miodowa
ul. Lwowska (Provincial Clinical Hospi-
tal No. 2)
ul. Cienista
ul. M. Kopernika (luggage)

EMERGENCY PHONE

112

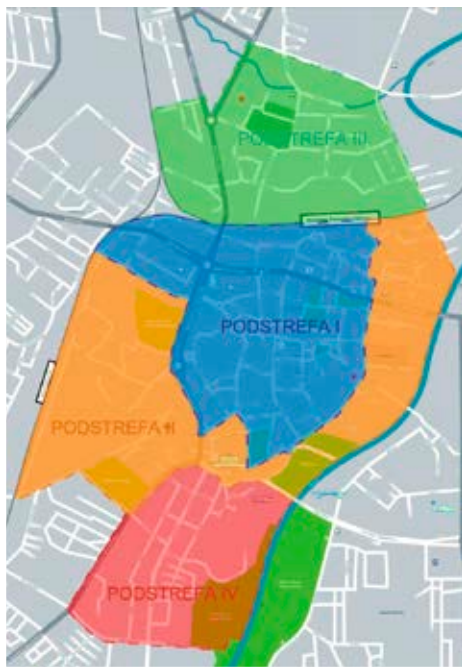


PRACTICAL INFORMATION

PAID PARKING ZONE

In Rzeszów, a paid parking area is in operation. Tolls for parking vehicles on public roads are collected on weekdays, from Monday to Friday, from 9:00 a.m. to 5:00 p.m.

It is divided into sub-zones:



Subzone	First hour	Second hour	Third hour	Fourth hour
I „Blue”	4,00 zł	4,80 zł	5,70 zł	4,00 zł
II „Orange”	2,50 zł	3,00 zł	3,60 zł	2,50 zł
III „Green”	2,50 zł	3,00 zł	3,60 zł	2,50 zł
IV „Red”	2,50 zł	3,00 zł	3,60 zł	2,50 zł

PRACTICAL INFORMATION



We encourage you to download and install the E-PARKING application, which will guide you to available paid parking spaces.





PUBLIC TRANSPORT

TICKETS - TRAVEL - CHECKING

- ▶ To avoid problems, make sure to buy a ticket.
- ▶ If you are travelling without a valid ticket - there is a chance you will meet a ticket inspector. The fine is PLN 280.00 if you pay later or PLN 196.00 on site.

GOOD TO KNOW:

- ▶ Children below school age travel for free.
- ▶ Transportation of luggage, bicycles and animals is free of charge.

Ticket prices in Rzeszów City Transport.

Ideal for exploring Rzeszow - 24 hour ticket - you validate it once and use public transport for 24 hours.

- ▶ Regular - 14.00 PLN
- ▶ Student - 7.00 PLN
- ▶ Reduced - 8.00 PLN

A short trip around Rzeszów with a 60-minute ticket – you scan your ticket once and travel at will on one bus or many for 60 minutes.

- ▶ Regular - 6.00 PLN
- ▶ Student - 3.00 PLN
- ▶ Reduced price - 3.80 PLN

Fast journey with a 40-minute ticket – you scan your ticket once and travel at will on one bus or many for 40 minutes.

- ▶ Regular - 4.00 PLN
- ▶ Student - 2.00 PLN
- ▶ Reduced - 2.50 PLN

If you visit the city by yourself - buy a 5-day ticket - you can buy the ticket at a Customer Service Point (POP) or as a Rzeszow City Card, you specify 5 consecutive days and you can use the ticket in this period of time in any bus line.

- ▶ Regular - 26.00 PLN
- ▶ Student - 13.00 PLN
- ▶ Reduced - 16.00 PLN

For the current ticket prices,
please check:

www.ztm.rzeszow.pl